



19007 Forest Brook Road Germantown, MD 20874

Jed Williams

240.506.0179

Jed@HaganRealty.com



HAGAN REALTY



\$750,000

Front Exterior



Property Details



Bedrooms
4 Bedrooms + Den



Bathrooms
3 Full & 1 Half



Home Size
3,454 SQFT



Lot Size
7,161 SQFT



Levels
3 Levels



Year Built
1988



Solar
Owned 14.58 kW



Parking
2 Car Garage



HOA
Gunner Lake Village



HOA Fee
\$35/month



Taxes
\$7,481/year

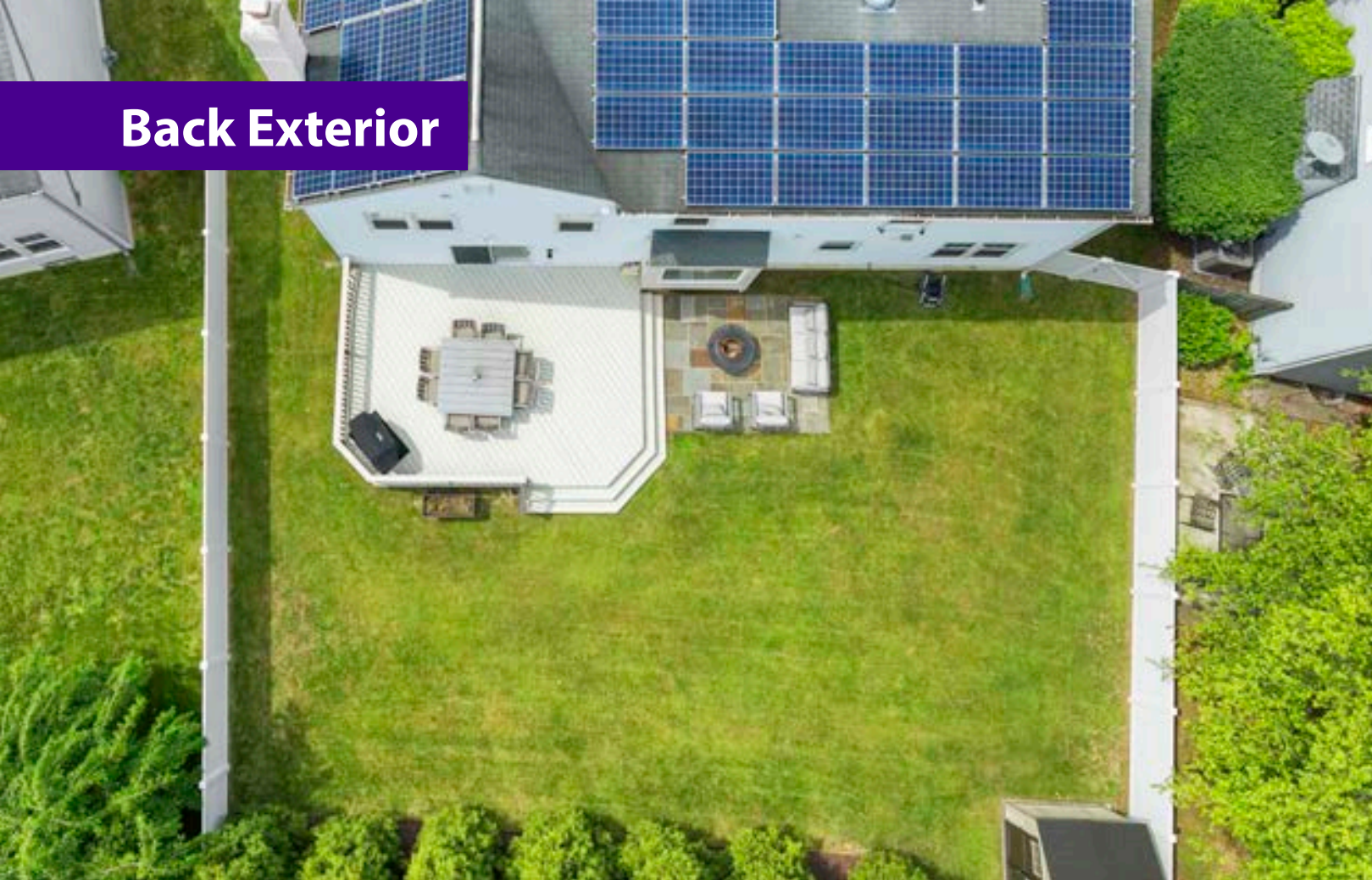


Schools
**Christa McAuliffe ES
Roberto Clemente MS
Seneca Valley HS**



15.89 MWh generated last year
\$2,224 in energy savings
plus \$673.39 in SREC payments
=
\$2,988 / year
\$241.50 / month
in Savings

Back Exterior



- Fully fenced back yard
- Composite deck
- Flagstone patio



Main Level



Living Room



Powder Room



Dining Room



Kitchen



Breakfast Area



Family Room







Bedroom Level

Primary Suite



Second Bedroom



Second Full Bathroom



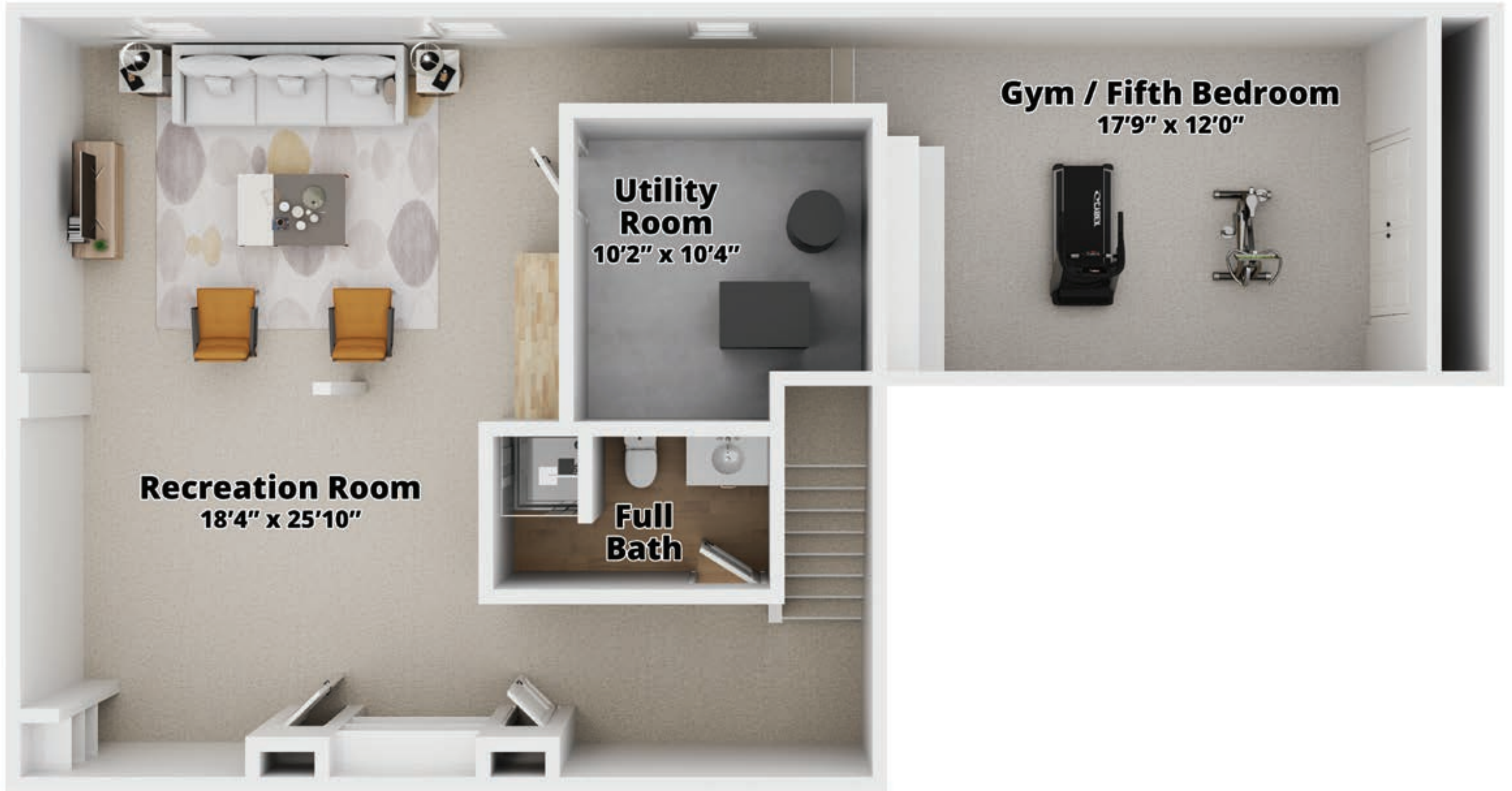
Third Bedroom



Fourth Bedroom



Basement



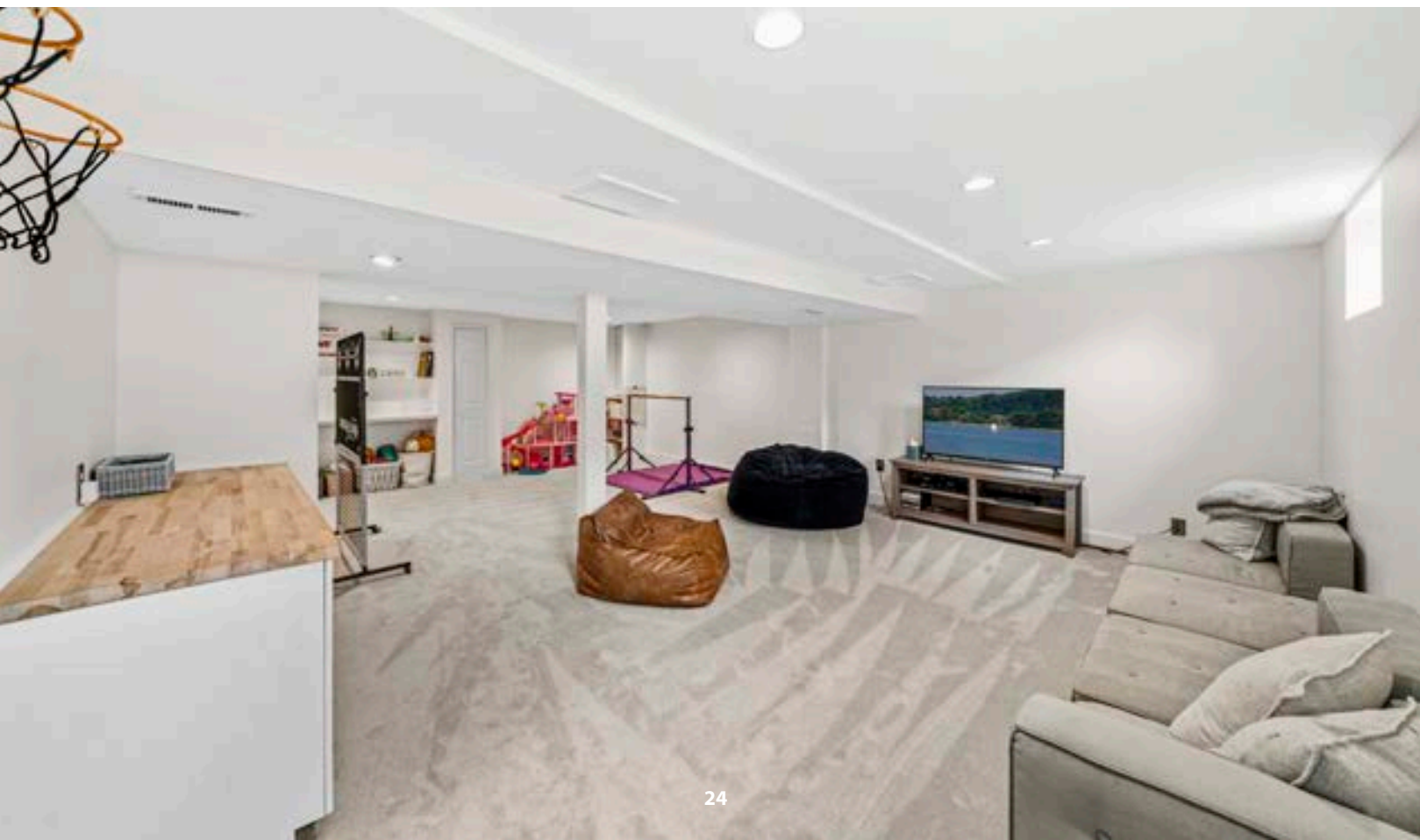
Recreation Room
18'4" x 25'10"

Utility Room
10'2" x 10'4"

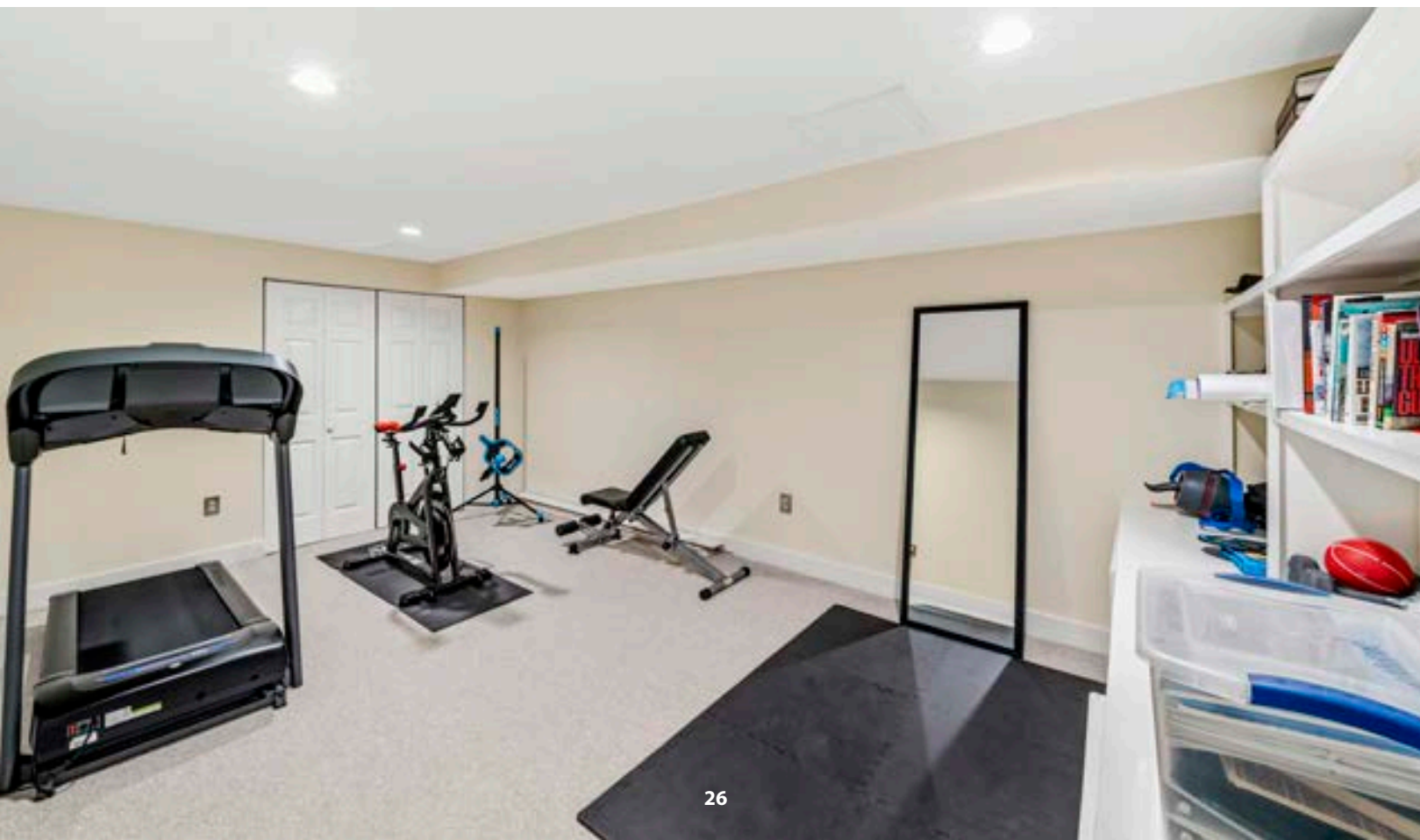
Full Bath

Gym / Fifth Bedroom
17'9" x 12'0"

Recreation Room



Fifth Bedroom / Gym / Den



Third Full Bathroom







S. Christa McAuliffe Elementary School
1.4 miles
📍 12500 Wisteria Drive
Germantown, MD 20874
☎ (240) 740-4920
👤 Mrs Marie U Gasaway



Seneca Valley High School
1.4 miles
📍 19401 Crystal Rock Drive
Germantown, MD 20874
☎ (240) 740-6400
👤 Mr Ricardo E Hernandez



Roberto W. Clemente Middle School
0.7 miles
📍 18808 Waring Station Road
Germantown, MD 20874
☎ (301) 284-4750
👤 Mr Jeffrey Brown



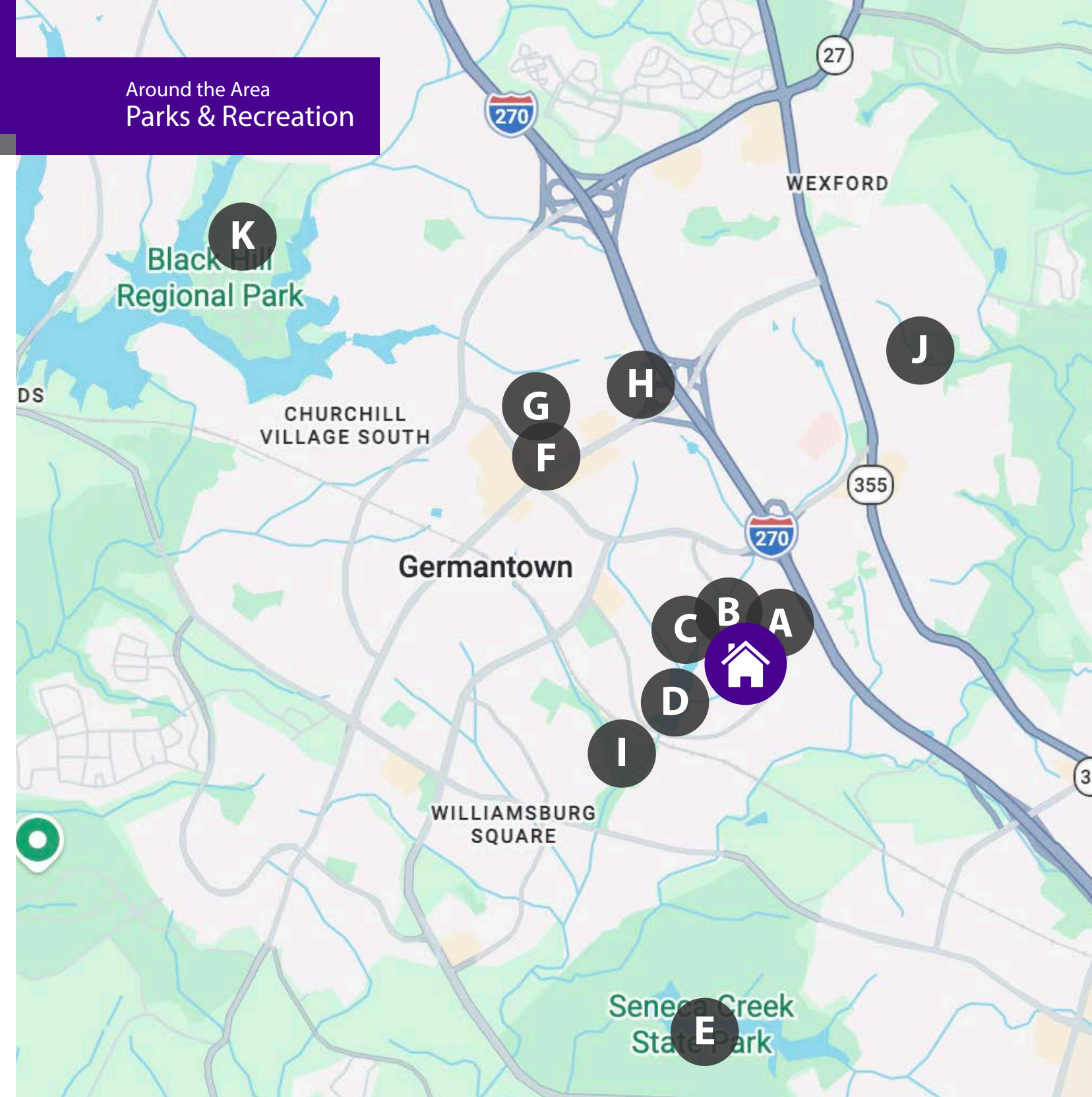
Germantown Library
1.7 miles
📍 19840 Century Boulevard
Germantown, MD 20874
☎ (240) 777-0110



Ride On Bus Stop 97
0.1 miles



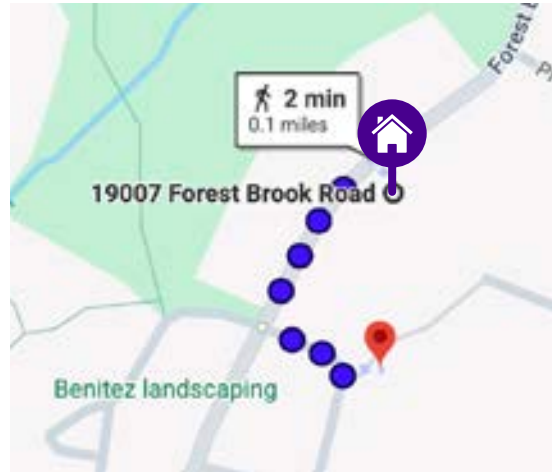
Germantown Marc Station
1.8 miles



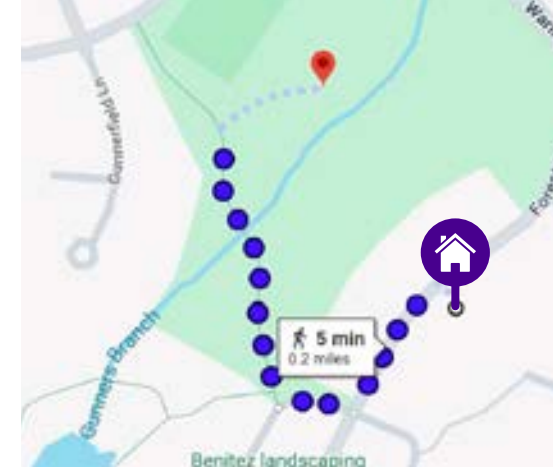
● Parks & Rec

- | | |
|----------------------------------|-------------------------------|
| A Ebbside Tot Lot | G Germantown Town Center Park |
| B Waring Station | H Top Golf |
| C Community Walking Trail | I Gunners Branch Park |
| D Gunners Lake Local Park | J Clearspring Local Park |
| E Seneca Creek State Park | K Black Hill Regional Park |
| F Black Rock Center For the Arts | |

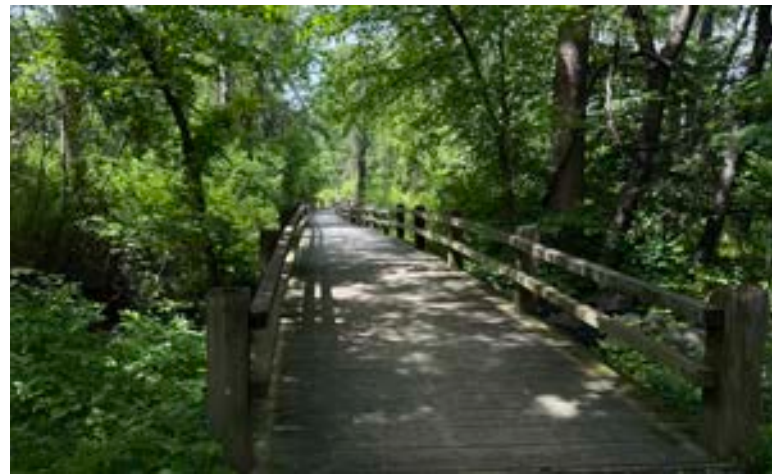
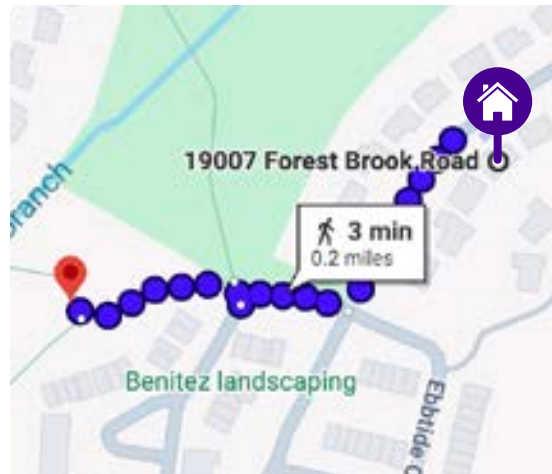
Ebbtide Tot Lot – 0.1 miles



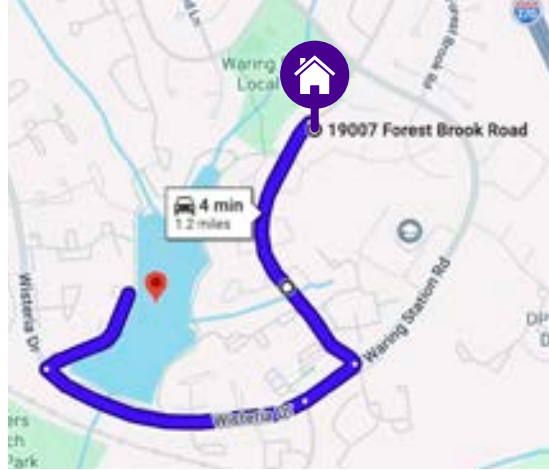
Waring Station Local Park – 0.2 miles



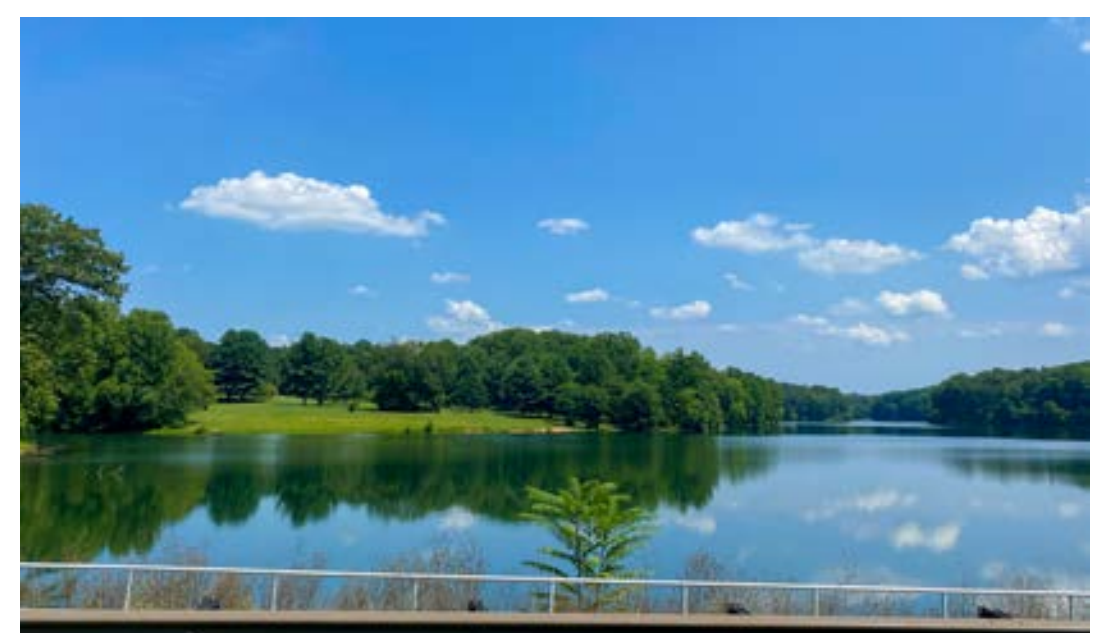
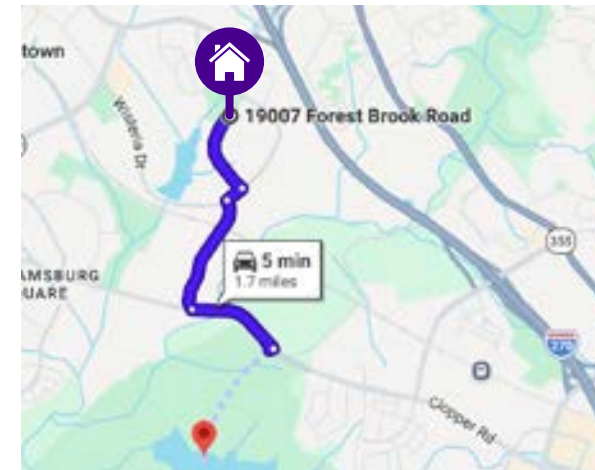
Community Walking Trail – 0.2 miles



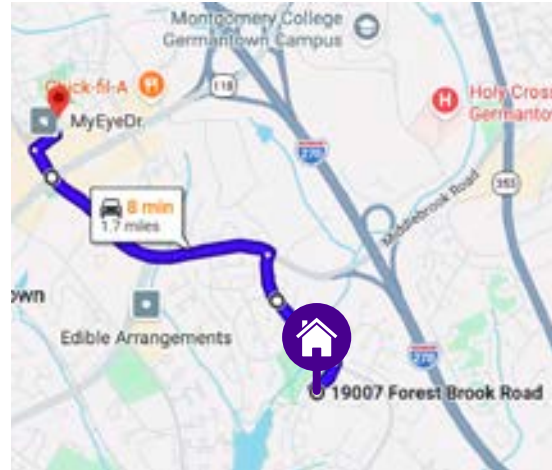
Gunner's Lake Local Park – 1.2 miles



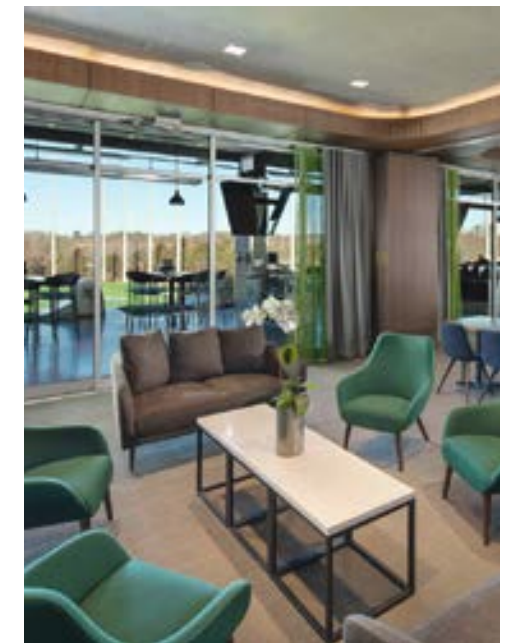
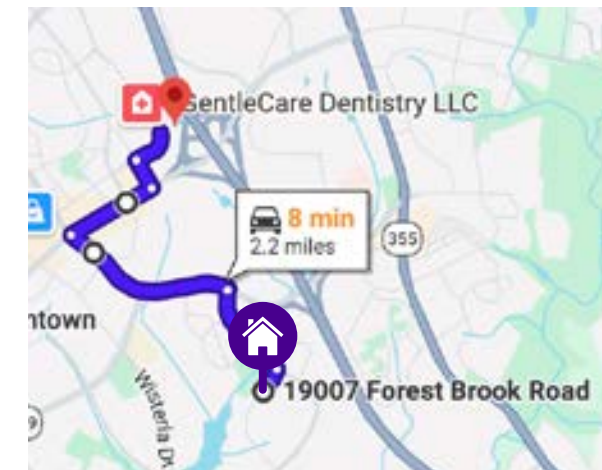
Seneca Creek State Park – 1.7 miles



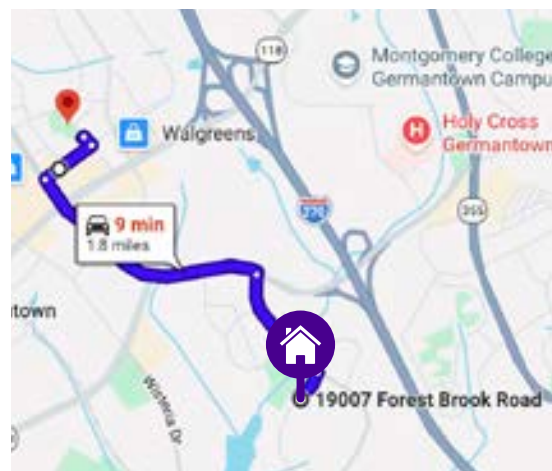
Black Rock Center For the Arts – 1.7 miles



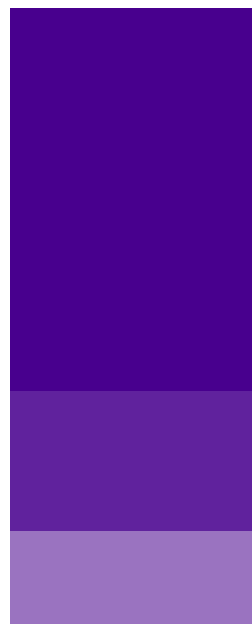
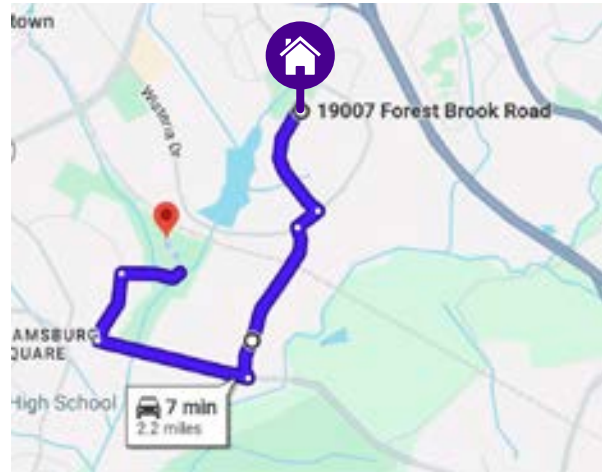
TopGolf – 2.2 miles



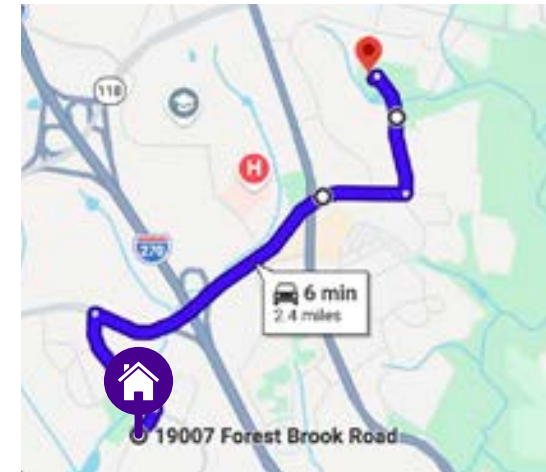
Germantown Town Center Park – 1.8 miles



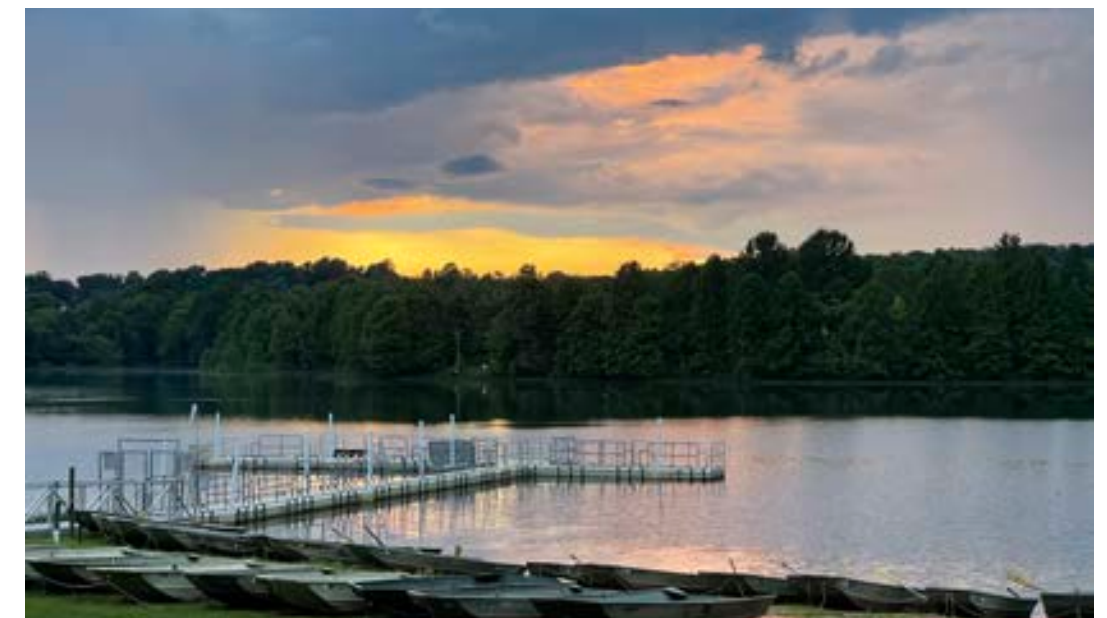
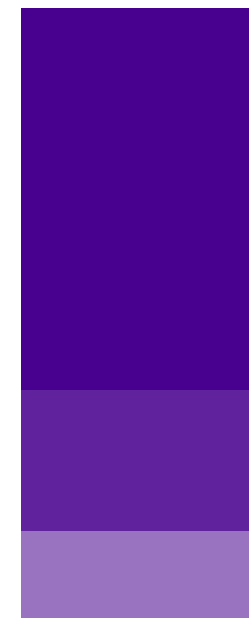
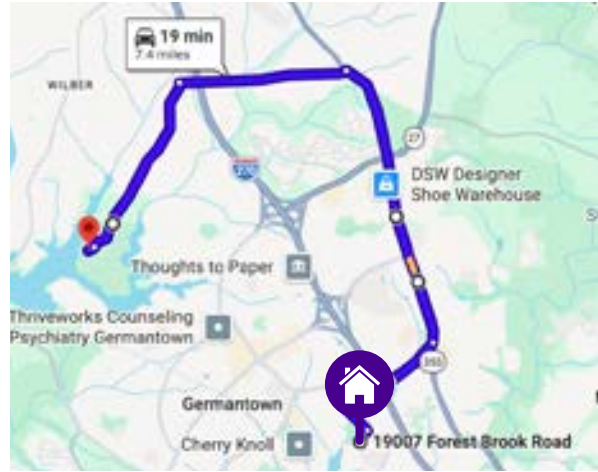
Gunners Branch Local Park – 2.2 miles



Clearspring Local Park – 2.4 miles



Black Hill Regional Park – 7.4 miles



1 BLACK HILL ROAD

Where did the road go? The crumbling asphalt path that disappears into the lake was once Black Hill Road before the valley was flooded. Now it serves as an underwater corridor for bass, crappie, bluegill, catfish and perch.

2 SILOS

Looking across the lake through the trees, you will see two silos. The land around and now under the lake was used for dairy farming. Up until the 1940's, farmers would deliver their milk jugs to one of the B&O railroad stops to meet the trains on their way to Washington, DC. Today the barn serves as a station for the Park Police Mounted unit and their horses.

3 WILDFLOWERS

Different kinds of wildflowers grow around the lake. Can you find them?

4 OSPREY PLATFORM

Osprey can be seen flying and fishing around the lake in the spring, summer, and fall. This nesting platform was constructed by the Black Hill maintenance crew. Man-made platforms are proven to help increase osprey population numbers, which have been effected by pesticide use and habitat loss. **Ask a Park Naturalist:** *How does an osprey carry a fish?*

5 THE INVADERS

From mid-June into the fall, you will see a plant similar to seaweed growing underwater in the shallow parts of the lake. This is Hydrilla- an exotic plant from Asia that was used in fish aquariums. It escaped and now pushes out many of our native aquatic plants. Carp are also invasive species you will find in the lake that cause environmental problems.

6 WOOD DUCK BOXES

Many of the coves of Little Seneca Lake contain special elevated nest boxes for wood ducks. Wood ducks typically nest in the cavities of trees next to waterways. When forests started to disappear due to development so did the wood duck. Luckily these man-made boxes help fledge 78 to 100 wood ducks on the lake every year.

7 DEEP WATER

The deepest part of Little Seneca Lake is just to your left. It is estimated to be 70 feet deep here! **Ask a Park Naturalist:** *What is Lake Turnover?*

8 CLARKSBURG ROAD BRIDGE

You've just paddled under the Clarksburg Road Bridge, but you've also paddled over another older Clarksburg Road that lies beneath the lake, forty feet down. This road, also known as the Seneca Path, followed the course of a trail used by Indians of the Seneca Nation in the seventeenth century.

9 TREES

The trees along the lake shore act like buffers, protecting the lake from erosion and nutrient runoff from fertilizers.

10 STALEY'S BOARDING HOUSE

If you look carefully into the brush, you can see the foundations of Staley's Boarding House, owned by Fleet and Mary Jane Staley in the late 1800's. After the B&O Railroad's Metropolitan Branch opened for passenger service in 1873, visitors from Washington D.C. began coming to Boyds in the summertime to enjoy a healthy vacation in the country. When the visitors returned to Washington, they would take containers of clear spring water with them.

11 TURTLES

Red-bellied cooters and the smaller painted turtles like to bask on logs in this cove. On sunny days, hundreds of these solitary creatures come together, sometimes piled on top of each other like checkers, to warm their muscles and raise their body temperatures so that they can digest their food.

12 THE DAM

Water can be released at different levels from the dam to control the amount of water in the lake for different purposes. In the summer, dam operators release cool water from the lake bottom so that trout can live downstream in Little Seneca Creek.

13 BLACK HILL

The wooded slope on your right is called Black Hill. The hill acquired its name from a railway fire, so the story goes. The early B&O Railroad trains threw off hot cinders, and one day these cinders started a fire that burned the hill black.

According to another story, Black Hill was named after the gold fields of Black Hills, South Dakota. In the late 1800's, a few farmers who lived nearby discovered gold on their land. The amount of gold in the ore was low, but not low enough to discourage enthusiastic locals, who excavated several open pits. You can see one of these old mining pits if you walk past the Park Manager's office along the Black Hill Trail.

14 EAGLES

Ahead is a large dead tree that is a favorite perch of our resident bald eagles. Since 2006, Black Hill Regional Park has been home to nesting bald eagles and their offspring. **Ask a Park Naturalist:** *Does a Bald eagle always have a white head and tail feathers?*

15 ROCK OUTCROPS

Along the sides of the channel you can see bluish rocks, layered like pages pressed together. This is the local bedrock known as marbling schist, formed in the late Precambrian Era, before life emerged from the oceans. You rarely find this rock on the surface of the earth, except in deep stream valleys.

16 BEAVER LODGE

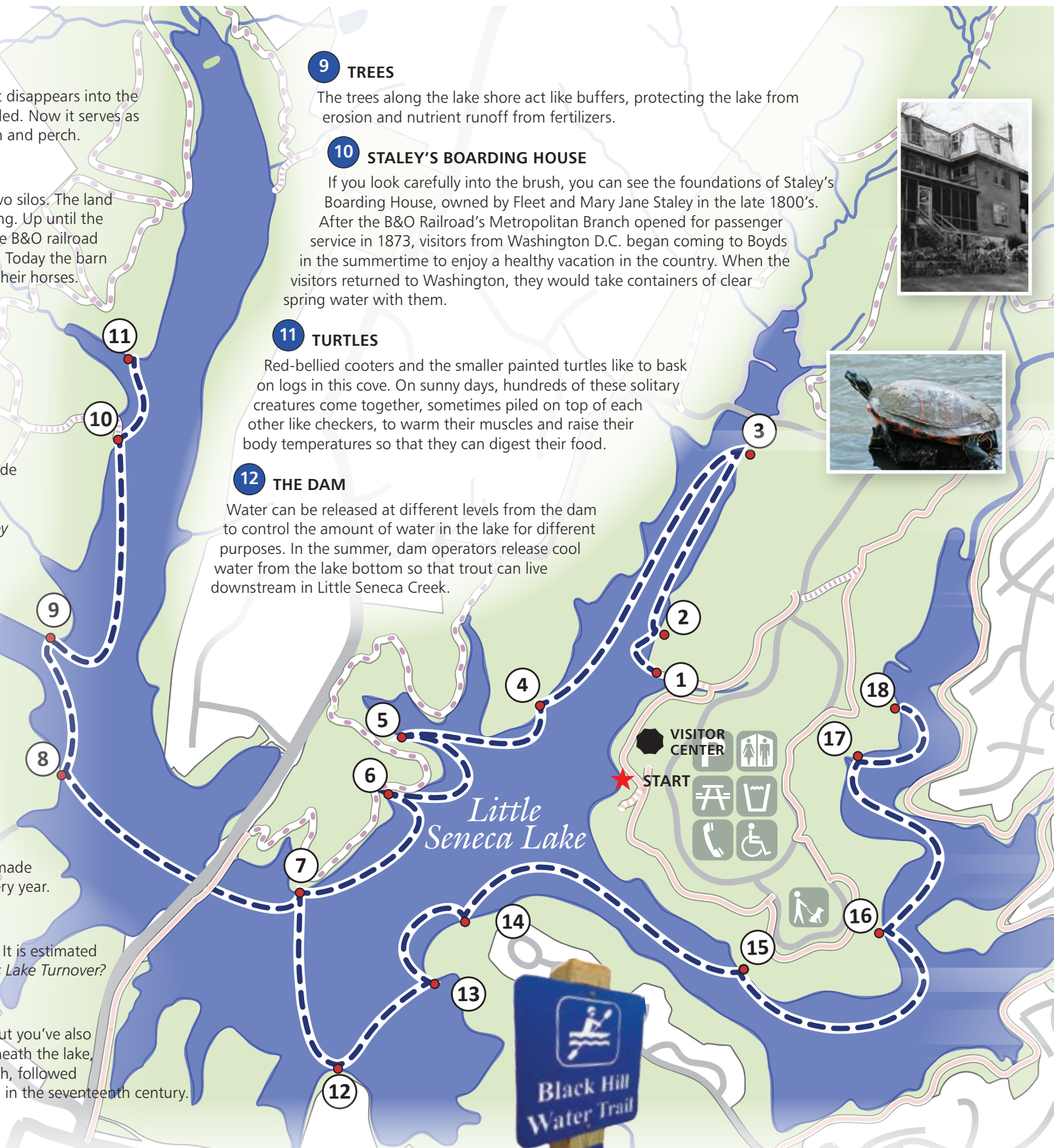
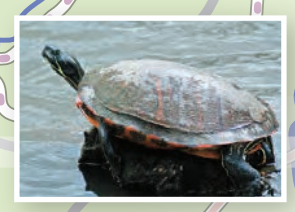
There are numerous active beaver lodges on the lake. You may have noticed pointed stumps and trees missing bark at their bases along the lake shore. These are telltale signs of beaver activity. The entrance to the lodge is underwater. Inside the lodge is an air-filled chamber where the beavers sleep, eat, and raise their young.

17 FOREST OF DEAD TREES

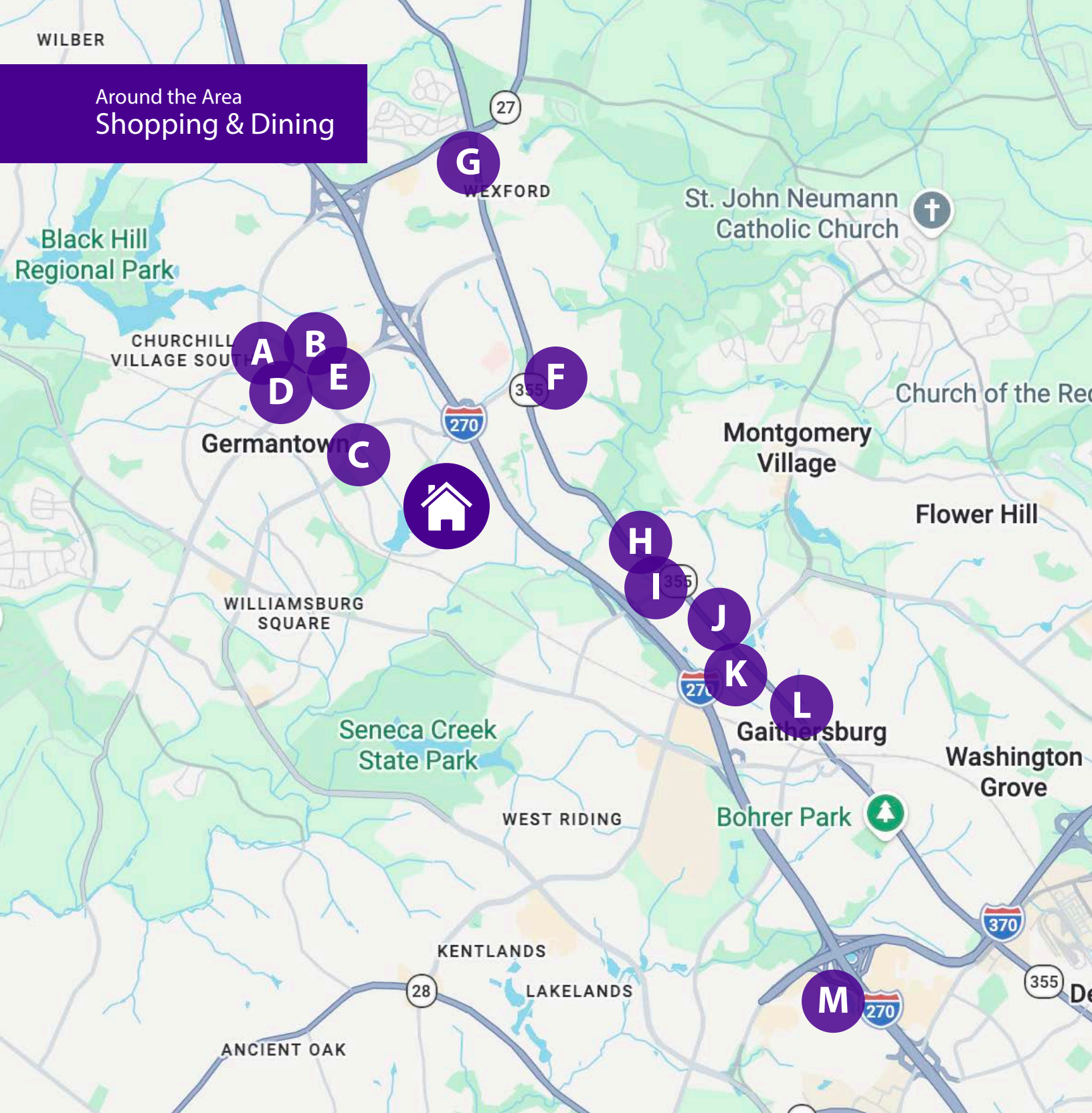
When the stream valley was flooded to create the lake, many trees were left standing on purpose. These snags provide excellent habitat for creatures such as birds and fish. What do you see around the trees, above and below the watery depths?

18 THAT'S WEIR

The small islands ahead are actually man-made weirs used in each of the three branches of the lake to keep the water clean. The weir system causes water to enter into the lake at a curve and traps sediment with underwater rock walls.



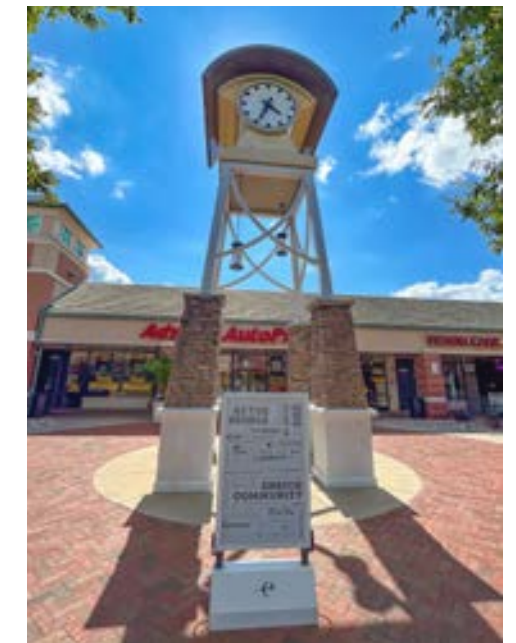
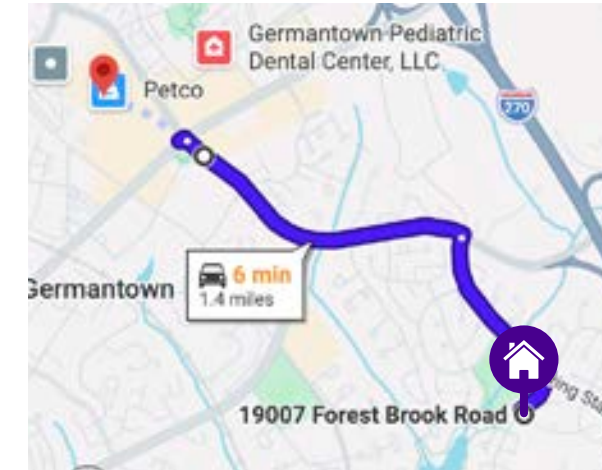
Around the Area Shopping & Dining



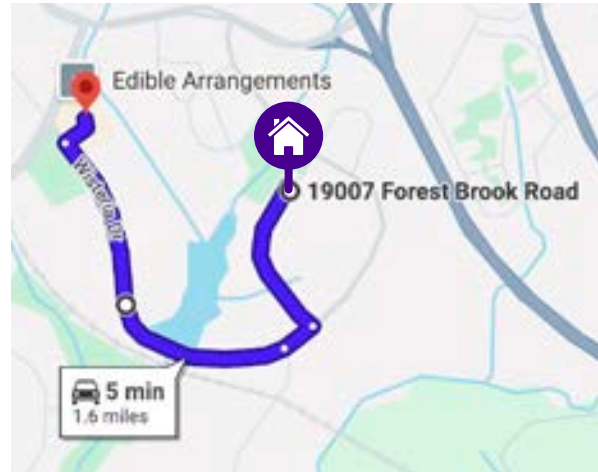
● Shopping & Dining

- A** Germantown Commons
- B** Safeway
- C** Germantown Square Shopping Center
- D** Germantown Plaza
- E** Shops at Seneca Meadows
- F** Fox Chapel Shopping Center
- G** Milestone Center
- H** Shops at Spectrum Apartments
- I** La Villa Restaurant
- J** Costco
- K** Sam's Club
- L** Gaithersburg Square
- M** Gaithersburg Shopping Center

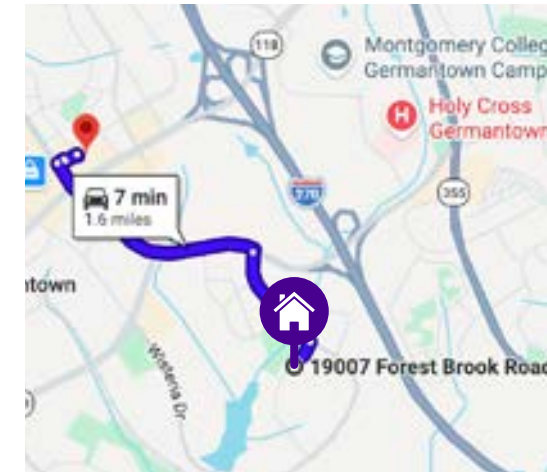
Germantown Commons – 1.4 miles



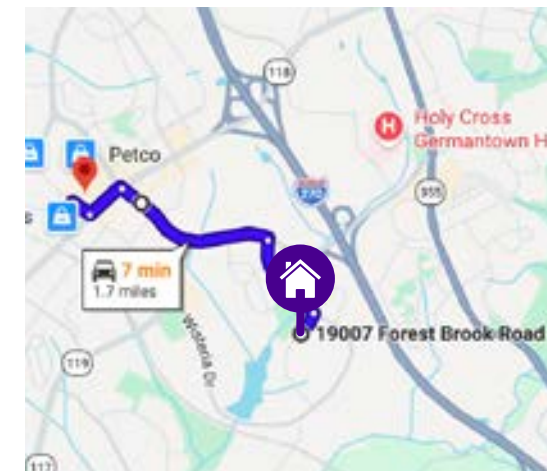
Germantown Square Shopping Center – 1.6 miles



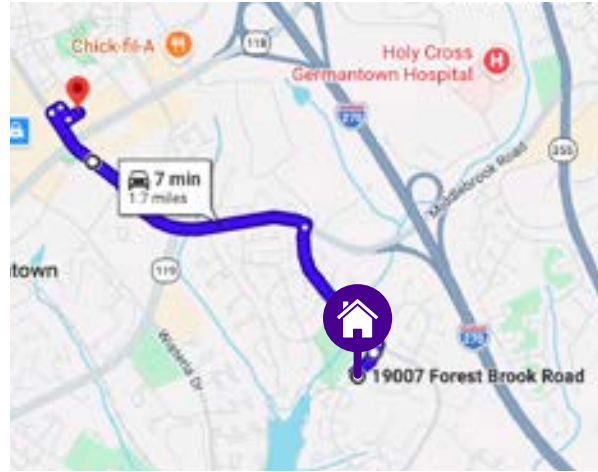
Safeway – 1.5 miles



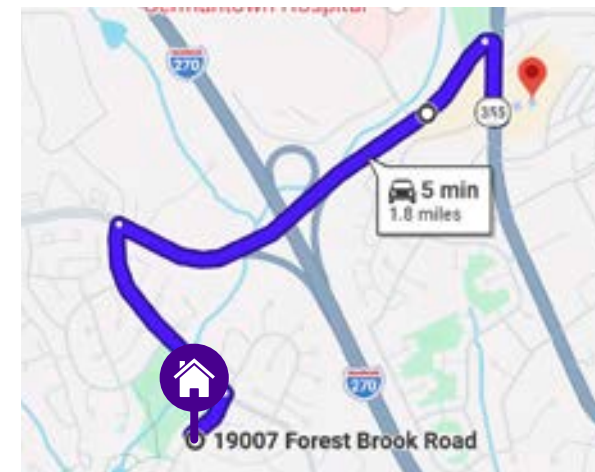
Germantown Plaza – 1.1 miles



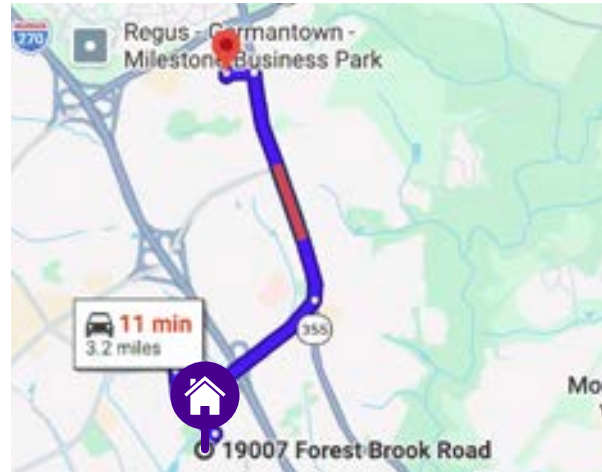
Shops at Seneca Meadows – 1.7 miles



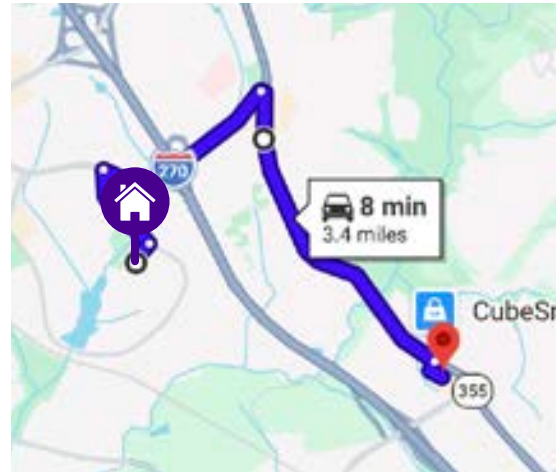
Fox Chapel Shopping Center – 1.8 miles



Milestone Shopping Center – 3.2 miles



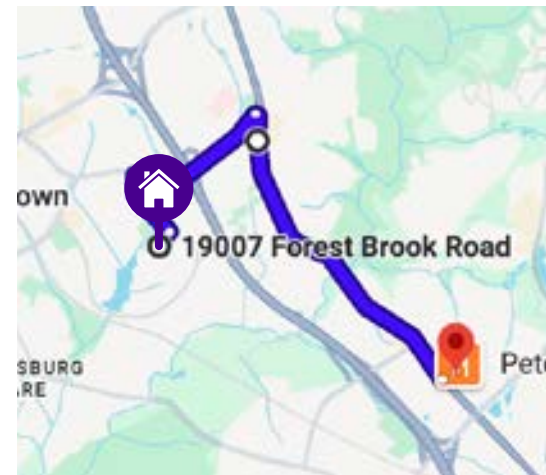
Shops at Spectrum – 3.4 miles



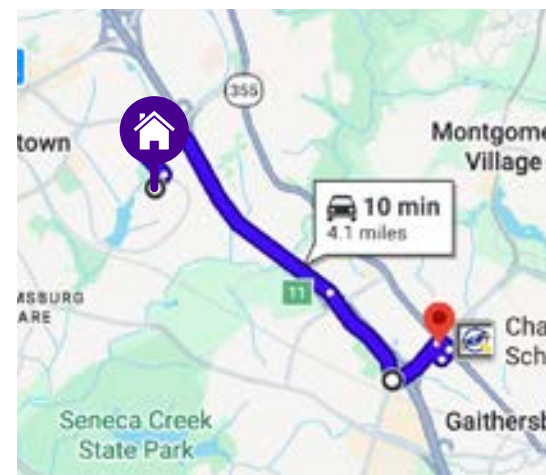
La Villa Restaurant – 3.5 miles



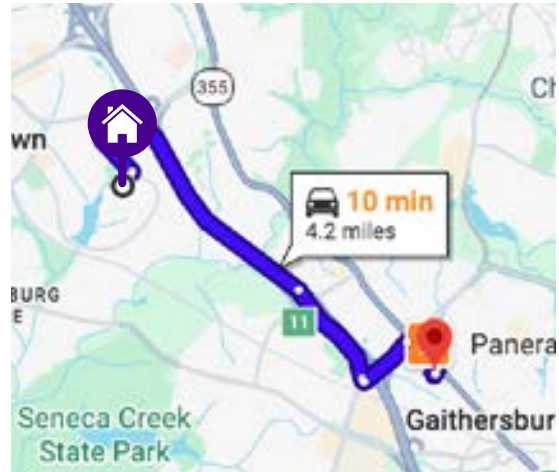
Costco – 4 miles



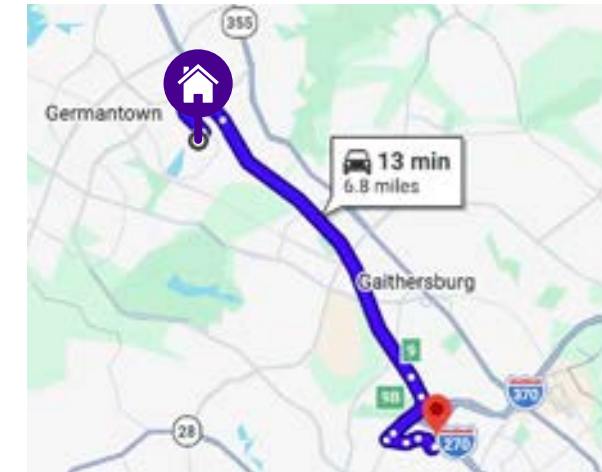
Sam's Club – 1.1 miles



Gaithersburg Square – 4.2 miles



Gaithersburg Shopping Center – 6.8 miles





Thinking of Selling Your Home?

Put Hagan Realty to work for you, and you'll be moved!

Services Include

- HDR Photos
- 3D Tours
- 4K Property Tours
- Property Guides
- Targeted Social Ads
- Custom Websites
- Site Maps
- Arial Imagery
- Floor Plans
- Open Houses
- MLS Syndication
- Custom Signs

In an ever-evolving real estate market, Hagan Realty stands out as your go-to partner for selling your home at the best price, in the least time, and with unparalleled success. We go beyond just putting a 'For Sale' sign on your lawn.

Our in-house experts utilize state-of-the-art HDR photography, 4K video, and 3D tours to make your property shine in its best light. Forget generic listings; every home gets a custom website focused solely on showcasing its unique features, and we employ targeted social media ads to reach potential buyers across multiple platforms. We arm visiting buyers with comprehensive property guides-detailing everything from your home's amenities to the local schools-and our open houses effectively reach nearly half of all home buyers. From the sky with FAA-licensed

drone pilots to the ground with full-color, furnished floor plans, we've got every angle covered. If you want your property to stand out and attract top-dollar offers, let Hagan Realty's unmatched tools and expertise work for you.

Contact us today to learn more.

If you are currently under a written contract to use another real estate broker exclusively, please disregard this notice. It is not our intention to solicit other real estate brokers' clients.

Thank You for Visiting

Thank you for viewing my listing here at 19007 Forest Brook Road.

If you have any questions regarding this property, or would like to make an offer, please either contact me directly or have your agent do so if you are represented.

Jed Williams

Principal Broker

Cell 240.506.0179
Office 866.Hagan.01
Fax 301.540.1429
Jed@HaganRealty.com
www.HaganRealty.com



All information contained in this booklet is deemed reliable but not guaranteed. All prospective purchasers are strongly encouraged to perform all necessary due diligence, prior to writing an offer.





For more information visit

www.19007ForestBrook.com

